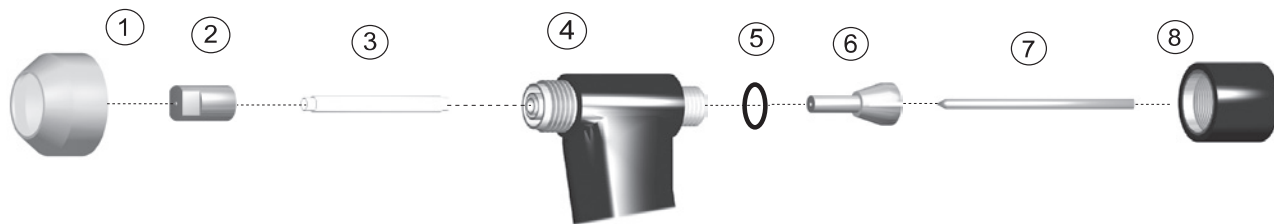


# REPLACEMENT PARTS SUITABLE FOR Thermal Dynamics®

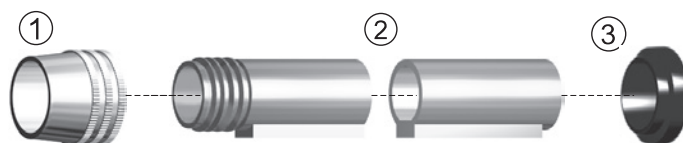
## PWH/M 2A WELDING TORCH



Item	Part No.	Ref. No.	Description	Std. Pkg	Item	Part No.	Ref. No.	Description	Std. Pkg.
1.	T-1482	8-2071	Shield Cup	5	T-1037	8-2028		Torch Head, 90°	1
2.	T-1483	8-2023	Tip, .046, 35A	10	T-1493	8-2097		Torch Head, Machine	1
	T-1485	8-2025	Tip, .081, 75A	10	5.	T-1494	8-2035	O-Ring	5
	T-1486	8-2079	Tip, Long, .031	10	6.	T-1495	8-2039	Collet	1
	T-1487	8-2080	Tip, Long, .046	10		T-0766	8-2041	Collet (.040)	1
	T-1488	8-2082	Tip, Long, .062	10	7.	T-1496	8-2033	Electrode	10
	T-1489	8-2083	Tip, Long, .081	10		T-0768	8-2044	Electrode (.040), Std.	10
3.	T-1490	8-2040	Gas Distributor	1	8.	T-1497	8-2032	Back Cap	1
4.	T-1491	8-2036	Gasket	5		T-0765	8-2030	Back Cap, Extended	1
	T-1492	8-2027	Torch Head, 70°	1					

## ACCESSORIES

### Machine Torch



Item	Part No.	Ref. No.	Description	Std. Pkg	Item	Part No.	Ref. No.	Description	Std. Pkg.
1.	T-0157	8-4018	Nut	1	NS T-0774	2-2840		Machine Torch with 12.5' Leads without QD	1
2.	T-0159	8-5005	Mounting Tube	1	NS T-1532	9-2105		Negative Lead, Green, 12-1/2'	1
3.	T-0161	8-4204	Bushing	1	NS T-1533	8-1494		Negative Lead, Green, 25'	1
NS	T-1526	4-2539	Leads 12-1/2'	1	NS T-1534	9-2107		Positive Lead, Red 12-1/2'	1
NS	T-1527	4-2585	Leads 25'	1	NS T-1535	8-1495		Positive Lead, Red 25'	1
NS	T-1528	2-2443	Hand Torch 70° with 12-1/2' Leads	1	NS T-1536	8-1074		Plasma Hose 12 1/2'	1
NS	T-4106	2-2100	Hand Torch 70° with 12.5' Leads & QD	1	NS T-1537	8-1496		Plasma Hose 25'	1
NS	T-1529	2-2505	Hand Torch 70° with 25' Leads	1	NS T-1520	8-1075		Shield Hose 12 1/2'	1
NS	T-0772	2-2444	Hand Torch 90° with Leads 12.5'	1	NS T-1521	8-1497		Shield Hose 25'	1
NS	T-0775	2-2506	Hand Torch 90° with 25' Leads	1	NS T-1446	8-3138		Sleeving 12 1/2'	1
NS	T-1530	2-2480	Machine Torch with 12-1/2' Leads	1	NS T-1447	8-3139		Sleeving 25'	1
NS	T-1531	2-2594	Machine Torch with Leads 25'	1					

Last update of this page: 17/11/2015. See Revision history for details.

**THERMACUT®**  
THE CUTTING COMPANY

WWW.THERMACUT.CZ  
TEL.: +420 556 423 418  
SALES@THERMACUT.CZ

WWW.THERMACUT.DE  
TEL.: +49 (0) 27 39 40 33 0  
INFO@THERMACUT.DE

WWW.THERMACUT.COM  
TEL.: 1-603-542-6715  
CUSTOMERSERVICE@THERMACUT.COM

THERMACUT®, FHT-EX® AND EX-TRAFIRE® ARE REGISTERED TRADEMARKS OF THERMACUT, K. S. AND MAY BE REGISTERED IN CZECH REPUBLIC AND/OR OTHER COUNTRIES. ALL OTHER TRADEMARKS ARE PROPERTIES OF THEIR RESPECTIVE OWNERS. THERMACUT IS NO WAY AFFILIATED WITH Thermal Dynamics®. MOST THERMACUT PARTS ARE MADE FOR OR BY AN IBG COMPANY. PARTS INDICATED WITH A OEM ARE ORIGINAL PARTS MANUFACTURED BY THE ABOVE NAMED MANUFACTURER AND ARE BEING RESOLD BY THERMACUT. THERMACUT RESERVES THE RIGHT TO SUBSTITUTE OEM PARTS IN PLACE OF THERMACUT PARTS. VALID FROM JANUARY 2017 • PREVIOUS VERSION IS NO LONGER VALID. • © COPYRIGHT 2017 BY THERMACUT® CZECH REPUBLIC. ALL RIGHTS RESERVED.